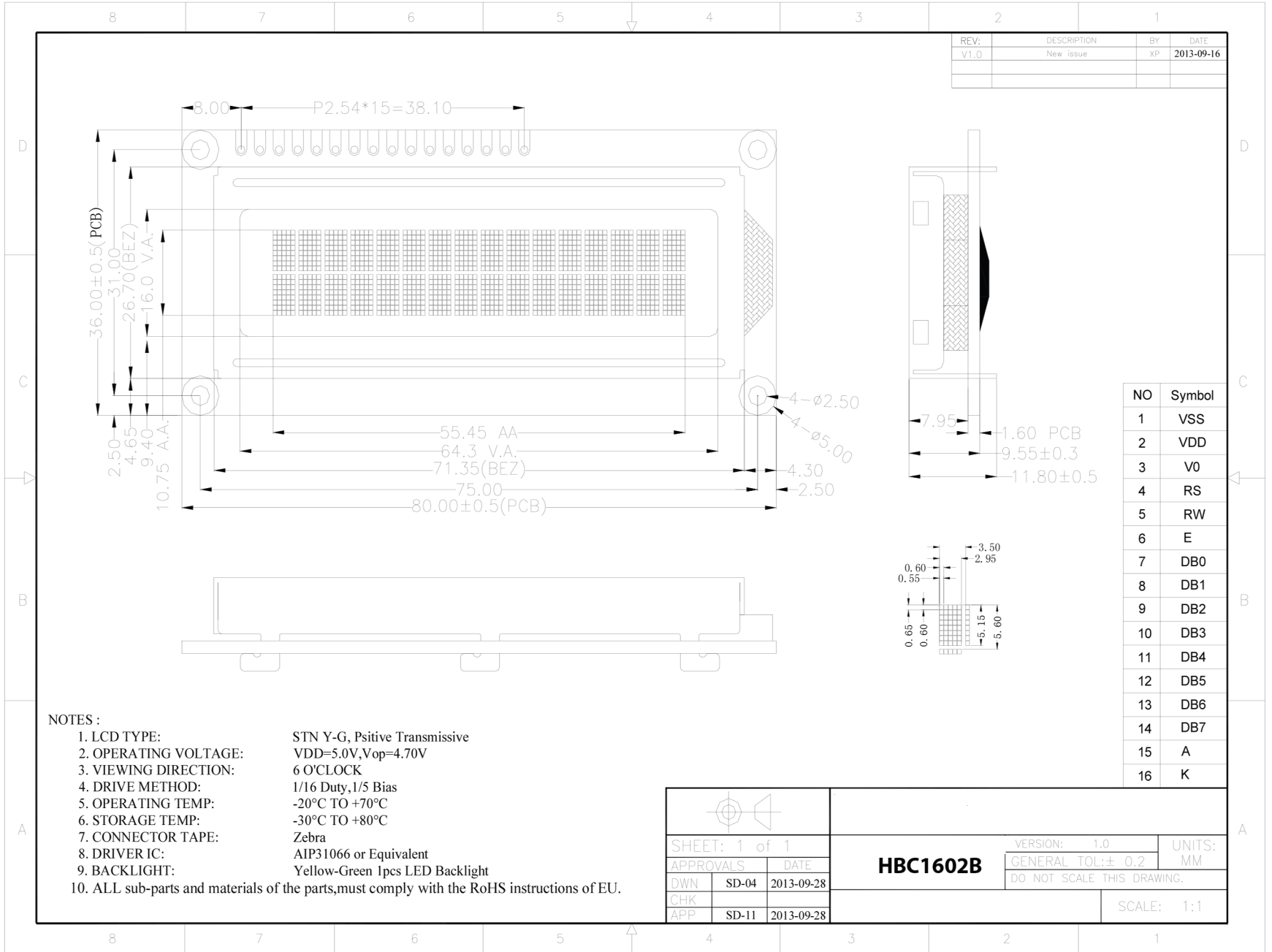


3. EXTERNAL DIMENSIONS



NOTES :

- |                       |                                 |
|-----------------------|---------------------------------|
| 1. LCD TYPE:          | STN Y-G, Psitive Transmissive   |
| 2. OPERATING VOLTAGE: | VDD=5.0V, Vop=4.70V             |
| 3. VIEWING DIRECTION: | 6 O'CLOCK                       |
| 4. DRIVE METHOD:      | 1/16 Duty, 1/5 Bias             |
| 5. OPERATING TEMP:    | -20°C TO +70°C                  |
| 6. STORAGE TEMP:      | -30°C TO +80°C                  |
| 7. CONNECTOR TAPE:    | Zebra                           |
| 8. DRIVER IC:         | AIP31066 or Equivalent          |
| 9. BACKLIGHT:         | Yellow-Green 1pcs LED Backlight |
10. ALL sub-parts and materials of the parts, must comply with the RoHS instructions of EU.

SHEET: 1 of 1		
APPROVALS	DATE	
DWN	SD-04	2013-09-28
CHK		
APP	SD-11	2013-09-28

**HBC1602B**

VERSION: 1.0

UNITS:

GENERAL TOL:± 0.2

MM

DO NOT SCALE THIS DRAWING.

SCALE: 1:1