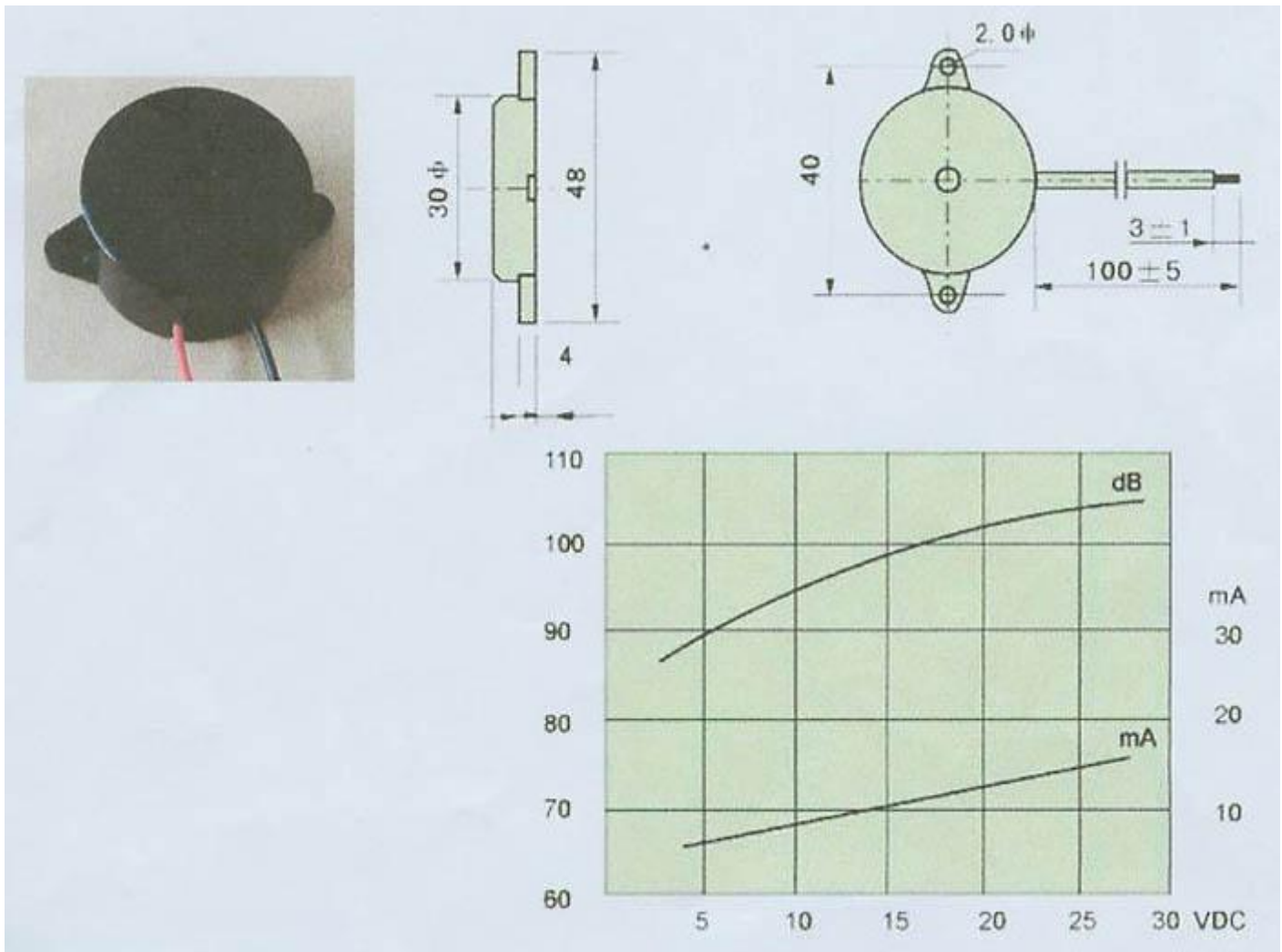
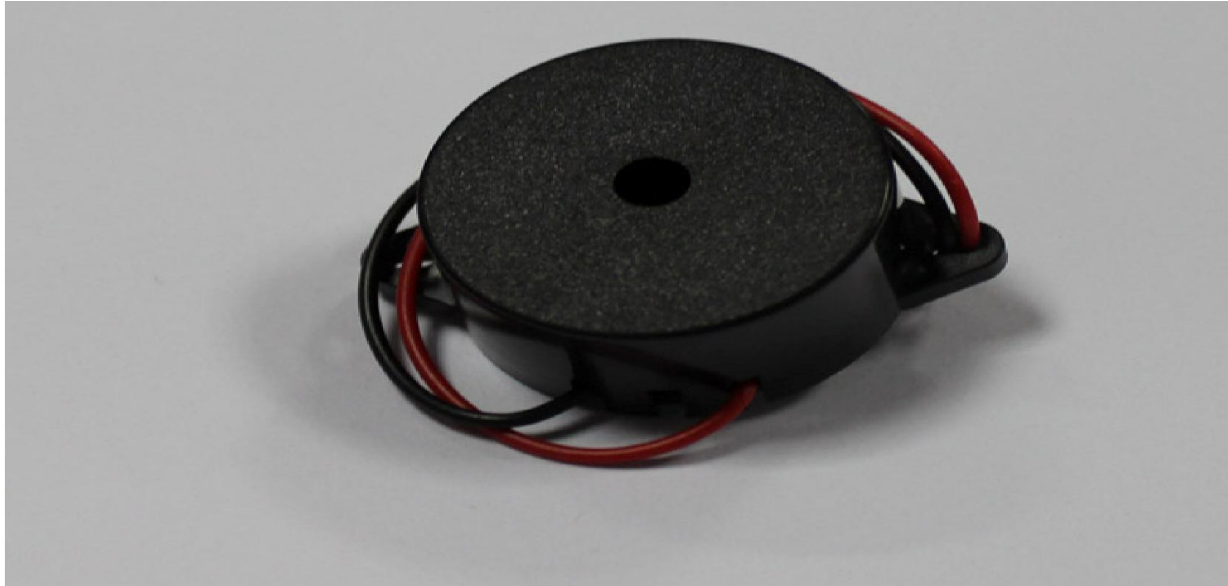


SFM-27-DI

Piezoelectric active



TYPE	SFM-27-DI
Rated voltage (V)	12VDC
Voltage range (V)	3~24VDC
Max.Rated Current (MA)	15mA at 12VDC
Sound Output (DB)	95dB at 12VDC/30cm
Resonant Freq (KHZ)	3.0±0.5
Operating Temp (°C)	-20-+45
Storage Temp (°C)	-20-+60
Weight (G)	3.5g

Jiangsu Chengli Electronic Co., Ltd.